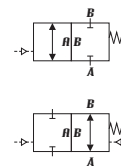


lateral valve

type PCG-H 15 F3



2/2-way valve air operated
pressure range PN 0-500 bar
orifice design DN 15 mm cartridge
function valve normally closed
symbol NC
 valve normally open
symbol NO



actuation air operated with spring return
construction brass
accessories valve body (see extra sheet)
 adapter (see extra sheet)
 particle trap (see extra sheet)
valve seat Peek to Monel
seal materials EPDM, FPM, NBR, PCTFE, PEEK

required information - valve

- orifice
- function nc/no
- operating pressure
- flow rate
- media
- media temperature
- ambient temperature

required information - accessories

- valve body
- adapter
- particle trap

required information - pneumatic

- actuation pressure range min/max
-
-
-
-

general specification

options

| | | | |
|-----------------------------|---------------------------------|---|-------------|
| connection | PCG-H | on valve body | |
| function | | NC | NO |
| pressure range | bar | 0 - 500 | |
| flow rate (Kv) | m ³ /h | 3,3 | |
| vacuum | leak rate | < 10 ⁻⁶ mbar x l x s ⁻¹ | |
| pressure-vacuum | P ₁ ↔ P ₂ | pressure side 500 bar max. vacuum side leak rate < 10 ⁻⁶ mbar x l x s ⁻¹ (actuation pressure 7 bar min.) | |
| back pressure | P ₂ > P ₁ | 500 bar (actuation pressure 7 bar min.) | |
| media | | gases | |
| abrasive media | | | |
| damping | opening | | |
| | closing | by throttles | |
| flow direction | | A ► B / B ► A | |
| switching cycles | 1/min | 80 | |
| switching time | ms | opening 360 | closing 400 |
| media temperature | °C | - 40 to + 80 | |
| ambient temperature | °C | - 40 to + 60 | |
| flush ports | | | |
| leak ports | | | |
| limit switches | | by adapter on valve body | |
| manual override | | by 3/2-way-pilot valve | |
| approvals | O ₂ | 300 / 420 bar | |
| mounting | | threads in valve body | |
| weight | kg | 7,7 | |
| additional equipment | | valve body, adapter, particle trap | |

electrical specifications

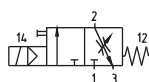
options

| | |
|------------------------------|--|
| nominal voltage | |
| power consumption | |
| protection | |
| energized duty rating | |
| connection | |
| additional equipment | |
| coil | |
| max. temperatures | |
| explosion proof | |

pneumatic specifications

options

| | | |
|---------------------------|-------------------------|---------------------------------|
| actuation pressure | bar | 7,5 |
| air consumption | cm ³ /stroke | opening 45 closing 0 |
| switching speed | | opening adjustable by throttles |
| Control | | by 3/2-way pilot valve |
| actuator ports | 4 | BSP 1/8" |



3/2-way pilot valve
 ports BSP 1/8"
 pressure range 4 - 10 bar
 flow rate 350 l/min

specifications not highlighted are standard
 specifications highlighted in grey are optional

Type **PCG-H 15 F3 NC / NO**

