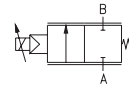


lateral valve

type PCG-H 15 PR



2/2-way valve air operated
pressure range PN 0-500 bar
orifice design DN 15 mm cartridge
function variable stroke control normally closed
symbol **NC**



actuation air operated with spring return
construction brass
accessories valve body (see extra sheet)
 adapter (see extra sheet)
 particle trap (see extra sheet)
valve seat Peek to Monel
seal materials EPDM, FPM, NBR, PCTFE, PEEK

required information - valve:

- orifice
- operating pressure
- flow rate
- media
- media temperature
- ambient temperature

required information - accessories:

- valve body
- adapter
- particle trap

required information - stroke control:

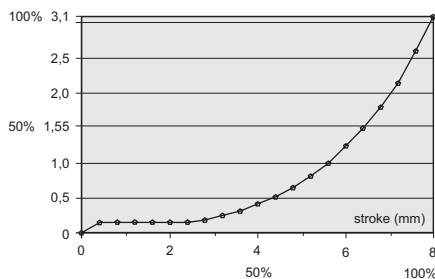
- positioner
- control signal mA / V
- external positional transducer

general specification

options

| | | | |
|------------------------------|---------------------------------|---|------------------------------------|
| connection | PCG-H | on valve body | |
| function | | NC | |
| pressure range | bar | 0 - 500 | |
| flow rate (Kv) | m ³ /h | variable flow control 0,14 - 3,1 | |
| vacuum | leak rate | < 10 ⁻⁶ mbar x l x s ⁻¹ | |
| pressure-vacuum | P ₁ ↔ P ₂ | pressure side 500 bar max. vacuum side leak rate < 10 ⁻⁶ mbar x l x s ⁻¹ (actuation pressure 7 bar min.) | |
| back pressure | P ₂ > P ₁ | 500 bar (actuation pressure 7 bar min.) | |
| media | | gases | |
| abrasive media | | | |
| damping | | | |
| flow direction | | A ► B | |
| switching cycles | | | |
| switching time | ms | opening / closing depending on control signal | |
| media temperature | °C | - 40 to + 80 | |
| ambient temperature | °C | - 40 to + 60 | |
| flush port | | | |
| leak ports | | | |
| positional transducer | | | by adapter on valve body |
| manual control | | by positioner | |
| approvals | O ₂ | 300 / 420 bar | |
| mounting | | | threads in valve body |
| weight | kg | 6,6 | |
| additional equipment | | | valve body, adapter, particle trap |

kv-value (m³/h)



electric specification positioner

options

| | | | |
|-----------------------------|----------------|------------------|--|
| nominal voltage | U _n | 24 V - DC | |
| power consumption | DC | < 10 Watt | |
| protection | IP 65 | acc. DIN 40 050 | |
| connection | Pg9 | cable gland | |
| additional equipment | | | |
| process signal | | 4 - 20 mA | |
| control signal | I _E | 0 - 20 mA | |
| | | 4 - 20 mA | |
| | U _E | 0 - 10 V | |
| max. temperature | media | + 10°C to + 60°C | |
| | ambient | ± 0°C to + 60°C | |
| explosion proof | | | |

pneumatic specifications

options

| | | | |
|---------------------------------|-------------------------|-----------------------------|--|
| actuation pressure range | bar | 7 | |
| air consumption | cm ³ /stroke | opening 30 closing 80 | |
| switching speed | | depending on control signal | |
| control | | by positioner | |
| actuator ports | 2/4 | BSP 1/8" | |

■ specifications not highlighted are standard
 ■ specifications highlighted in grey are optional

Type **PCG-H 15 PR**

