

lateral valve

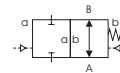
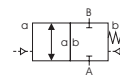
type PCG-H 20

5-PCG-H 20

type designation with pilot valve



2/2-way valve air operated
pressure range PN 0-500 bar
orifice DN 20 mm
design cartridge
function valve normally closed
symbol NC
 valve normally open
symbol NO



actuation air operated with spring return
construction brass
accessories valve body (see extra sheet)
 adapter (see extra sheet)
 particle trap (see extra sheet)
valve seat Peek to Monel
seal materials EPDM, FPM, NBR, PCTFE, PEEK

required information - valve

- orifice
- function nc/no
- operating pressure
- flow rate
- media
- media temperature
- ambient temperature

required information - accessories

- valve body
- adapter
- particle trap

required information - pneumatic

- nominal voltage
- type of protection
- actuation pressure range min/max
- low wattage coil
- pilot valve type

general specification

options

connection	PCG-H	on valve body	
function		NC	NO
pressure range	bar	0 - 500	
flow rate (Kv)	m ³ /h	3,7	
vacuum	leak rate	< 10 ⁻⁶ mbar x l x s ⁻¹	
pressure-vacuum	P ₁ ↔ P ₂	pressure side 500 bar max.	vacuum side leak rate < 10 ⁻⁶ mbar x l x s ⁻¹ (actuation pressure 7 bar min.)
back pressure	P ₂ > P ₁	500 bar (actuation pressure 7 bar min.)	
media		gases	
abrasive media			
damping	opening		
	closing	by throttles	by throttles on pilot valve
flow direction		A ► B / B ► A	
switching cycles	1/min	170	
switching time	ms	opening 160-7000	closing 180-7000
media temperature	°C	- 40 to + 80	
ambient temperature	°C	- 40 to + 60	
flush ports			
leak ports			
limit switches			by adapter on valve body
manual override			by 5/2-way-pilot valve
approvals	O ₂	300 / 420 bar	
mounting			threads in valve body
weight	kg	6,6	
additional equipment			valve body, adapter, particle trap

electrical specifications

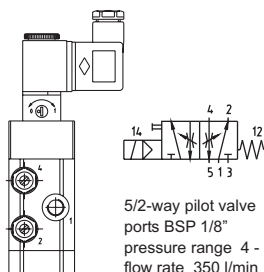
options

nominal voltage	U _n	24 V	-DC	special voltages upon request
	U _n	230 V	50 Hz - AC	special voltages upon request
power consumption	DC	4,8 Watt		2,5 Watt
	AC	pick up 12,6 VA holding 9,7 VA		
protection	IP 65	acc. DIN 40 050		
energized duty rating	ED	100%		
connection	Pg9	plug acc. DIN 43 650, 2 positions x180°		
additional equipment		illuminated plug with varistor		
coil		mounted 3 positions x90°		
max. temperatures	media	+ 10°C to + 60°C		
	ambient	- 10°C to + 50°C		
explosion proof	EEx m II T5	nominal voltage U _n	DC 24V	3,25 Watt
		power consumption	AC 230V 50Hz	2,90 Watt

pneumatic specifications

options

actuation pressure	bar	7	
air consumption	cm ³ /stroke	opening 30	closing 80
switching speed		adjustable by throttles	
control		by 5/2-way pilot valve	
actuator ports	2/4	BSP 1/8"	1 BSP 1/8" on pilot valve



■ specifications not highlighted are standard
 ■ specifications highlighted in grey are optional

Type **PCG-H 20 NC / NO**

